

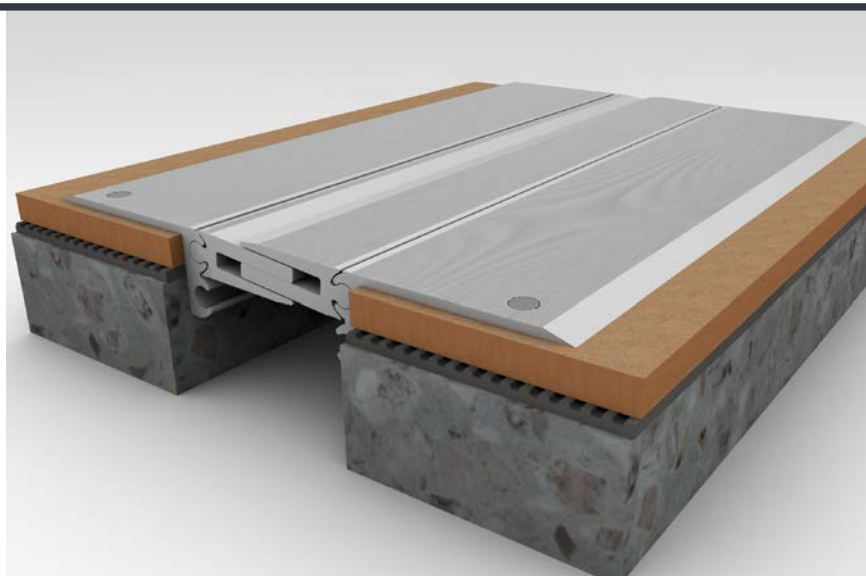


DEWMARK HEAVY





SV 42/80/N

Aluminium profile - Surface fixing

- Long service lifetime
- Attractive appearance
- Joint width 80 mm
- Total Movement 20 mm
- Movement in three directions



Technical Information

Profile	Joint width, F (mm)	Installation height, H (mm)	Visible width of profile, S (mm)	Overall width of profile, S_m (mm)	Horizontal movement, ΔF (mm)	Vertical movement, ΔF_h (mm)	Allowable loads, kN    			
SV 42/80/N	80	31	220	220	20 (+10/-10)	20 (+10/-10)	30 ¹	80 ¹	70 ¹	—

Corner version (joint along wall)

SV-E 42/80/N	80	31	150	150	20 (+10/-10)	20 (+10/-10)	Pedestrian			
--------------	----	----	-----	-----	--------------	--------------	------------	--	--	--

Material: Aluminium 6060

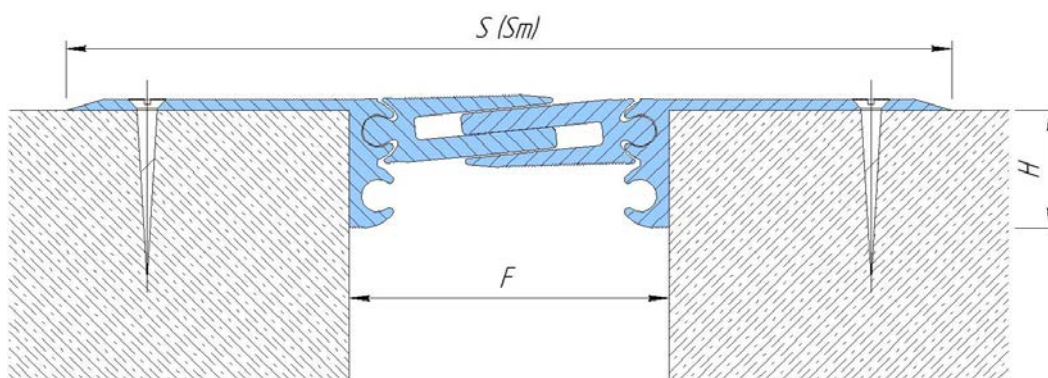
Color: Aluminium

Standard length: 3 meters

On order: Anodization, wood grain decorating

¹ To be approved

Installation: Roughnesses of a surface on which the profile is fixed have to be eliminated by MAPEGROUT leveling solution or similar. Aluminum profiles have to be installed on both sides of a joint and are snugged by anchors, regarding the recommendations about the choice of a fixture. For simplification of installation of an insert please use WD-40 lubricant (or an analog). Follow recommendations about installation from the brochure "Selection and installation of the Dewmark profiles. General recommendations".



SV 42/80/N