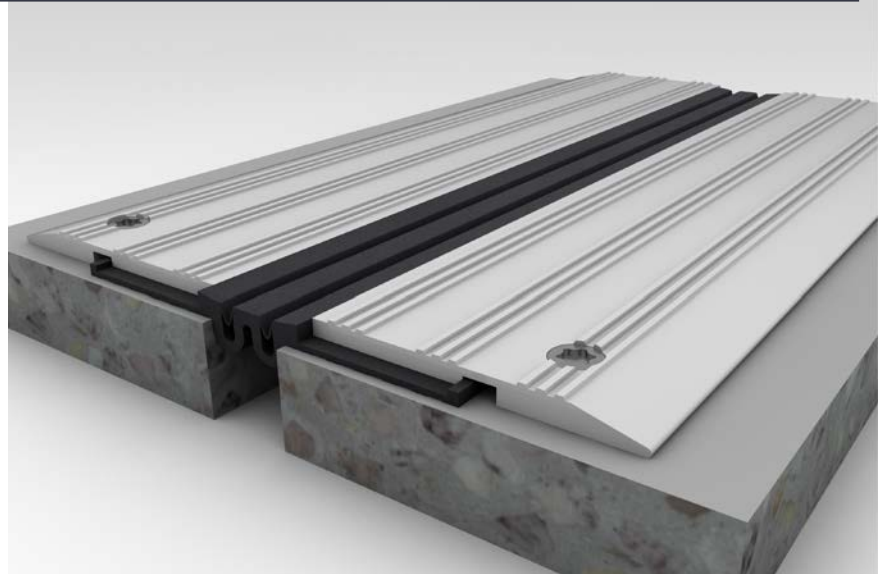




## WR 76/30

- Surface fixing
- Reliable waterproofing
- Long service lifetime
- Attractive appearance
- Joint width 30 mm
- Deformation to 30 mm
- Movement in three directions



### Technical Information

| Profile                                   | Joint width, F (mm) | Installation height, H (mm) | Visible width of profile, S (mm) | Overall width of profile, Sm (mm) | Horizontal movement, ΔF (mm) | Vertical movement, ΔFh (mm) | Allowable loads, kN |     |                 |   |
|---|---------------------|-----------------------------|----------------------------------|-----------------------------------|------------------------------|-----------------------------|---------------------|-----|-----------------|---|
|   |                     |                             |                                  |                                   |                              |                             |                     |     |                 |   |
| WR 76/30                                  | 30                  | 15                          | 240                              | 240                               | 30 (+15/-15)                 | 30 (+15/-15)                | 50                  | 100 | 70 <sup>1</sup> | – |
| <b>Angular options (joint along wall)</b> |                     |                             |                                  |                                   |                              |                             |                     |     |                 |   |
| WR-E 76/30                                | 30                  | 15                          | 135                              | 135                               | 30 (+15/-15)                 | 30 (+15/-15)                | Pedestrian          |     |                 |   |

**Material:** Aluminium 6060, Plasticized PVC (with modifiers: UV and ozone resistant; chemically resistant)

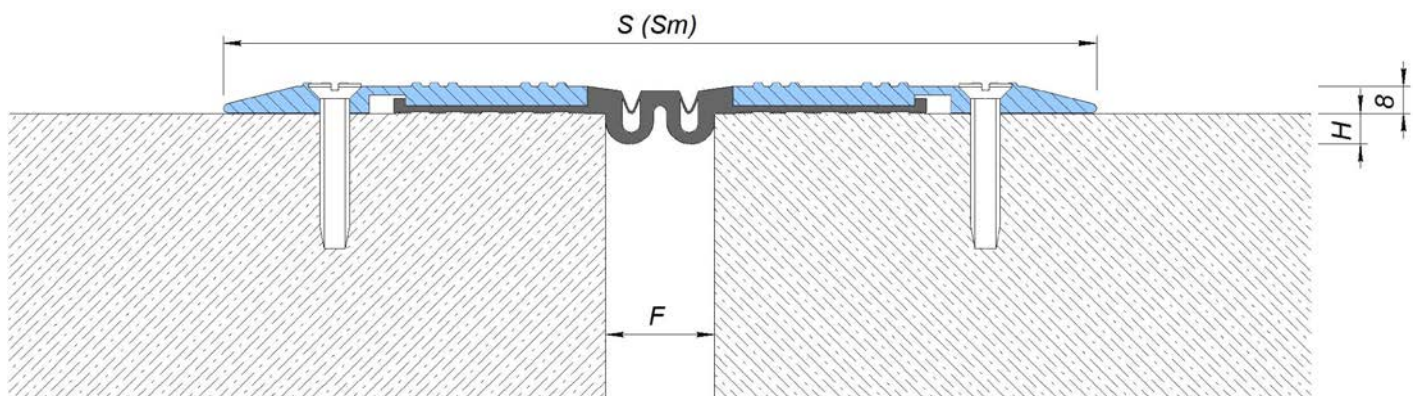
**Color:** black

**Standard length:** 3 meters

**On order:** Other RAL colors by catalog

<sup>1</sup>Only for pneumatic-tire wheel loader

**Installation:** Roughnesses of a surface on which the profile is fixed have to be eliminated by MAPEGROUT leveling solution or similar. Aluminum profiles have to be installed on both sides of a joint and are snugged by anchors, regarding the recommendations about the choice of a fixture. For simplification of installation of an insert please use WD-40 lubricant (or an analog). Follow recommendations about installation from the brochure "Selection and installation of the Dewmark profiles. General recommendations".



WR 76/30

