



DEWMARK STANDART

SV 27/.../45/50

Profile with a flexible insert

- For the floors in seismic hazardous areas
- For pedestrian loads
- Attractive appearance
- Wide range of insert colors
- Joint width up to 500 mm
- Movement to +/-16 mm



Technical Information

Profile	Joint width, F (mm)	Joint height, H (mm)	Visible width, S (mm)x2	Visible overall width of profile, Smf (mm)	Overall width, Sm (mm)	Horizontal movement, ΔF (mm)	Vertical movement, ΔFh (mm)	Seismic movement, ΔFs (mm)
SV 27/100/45/50	100	50	50x2	400	450	32 (+16/-16)	20 (+10/-10)	100 (+50/-50)
SV 27/200/45/50	200	50	50x2	500	550	32 (+16/-16)	20 (+10/-10)	100 (+50/-50)
SV 27/300/45/50	300	50	50x2	600	650	32 (+16/-16)	20 (+10/-10)	100 (+50/-50)
SV 27/400/45/50	400	50	50x2	700	750	32 (+16/-16)	20 (+10/-10)	100 (+50/-50)
SV 27/500/45/50	500	50	50x2	800	850	32 (+16/-16)	20 (+10/-10)	100 (+50/-50)

Material: Aluminium 6060, Plasticized PVC (UV and ozone resistant; operating temperature range:-30°C...120°C), painted black steel St3

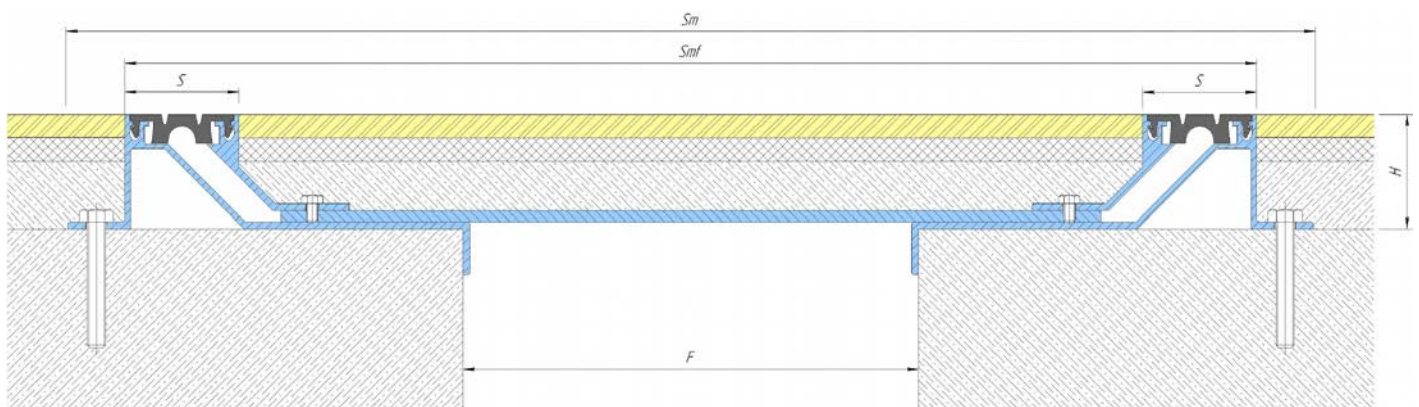
Color: black , grey (7035), beige (1015)

Standard length: 2,9 meters

On order: Any desired color insert to the RAL catalogue

Extras: A profile can be equipped with various inserts (see page "insert options"); **the joint width can be adjusted on custom basis**

Installation: Roughnesses of a surface on which the profile is fixed have to be eliminated by MAPEGROUT leveling solution or similar. Aluminum profiles have to be installed on both sides of a joint and are snugged by anchors, regarding the recommendations about the choice of a fixture. For simplification of installation of an insert please use WD-40 lubricant (or an analog). Follow recommendations about installation from the brochure "Selection and installation of the Dewmark profiles. General recommendations".



SV 27/200/45/50



DEWMARK
expansion joint systems



DEWMARK STANDART

SV 27/.../50/50

Profile with a flexible insert

- For the floors in seismic hazardous areas
- For pedestrian loads
- Attractive appearance
- Wide range of insert colors
- Joint width up to 500 mm
- Movement to +/-20 mm



Technical Information

Profile	Joint width, F (mm)	Joint height, H (mm)	Visible width, S (mm)x2	Visible overall width of profile, Smf (mm)	Overall width, Sm (mm)	Horizontal movement, ΔF (mm)	Vertical movement, ΔFh (mm)	Seismic movement, ΔFs (mm)
SV 27/100/50/50	100	50	55x2	400	450	40 (+20/-20)	20(+10/-10)	100 (+50/-50)
SV 27/200/50/50	200	50	55x2	500	550	40 (+20/-20)	20(+10/-10)	100 (+50/-50)
SV 27/300/50/50	300	50	55x2	600	650	40 (+20/-20)	20(+10/-10)	100 (+50/-50)
SV 27/400/50/50	400	50	55x2	700	750	40 (+20/-20)	20(+10/-10)	100 (+50/-50)
SV 27/500/50/50	500	50	55x2	800	850	40 (+20/-20)	20(+10/-10)	100 (+50/-50)

Material: Aluminium 6060, Plasticized PVC (UV and ozone resistant; operating temperature range:-30°C...120°C), painted black steel St3

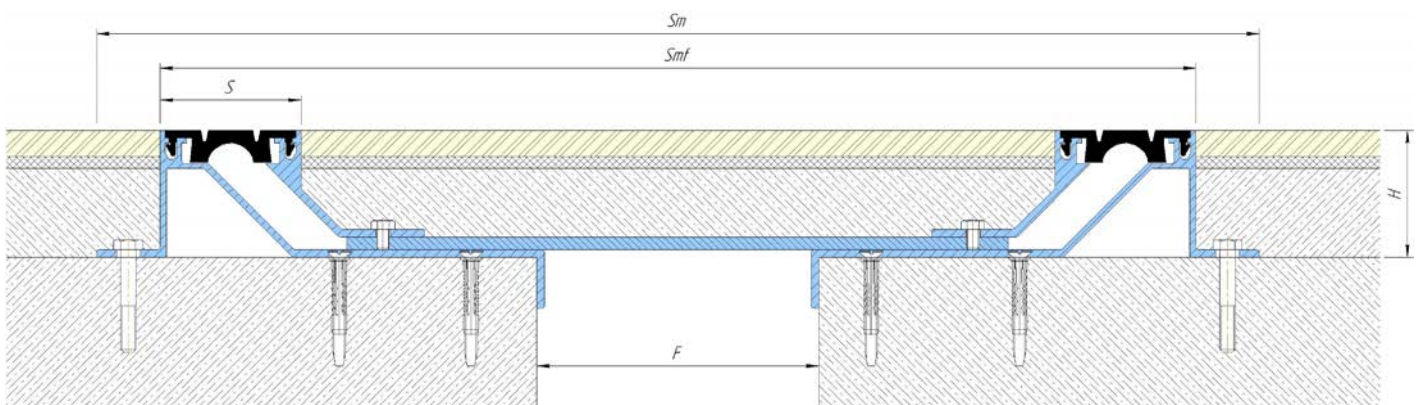
Color: black , grey (7035), beige (1015)

Standard length: 2,9 meters

On order : Any desired color insert to the RAL catalogue

Extras: A profile can be equipped with various inserts (see page "insert options"); **the joint width can be adjusted on custom basis**

Installation: Roughnesses of a surface on which the profile is fixed have to be eliminated by MAPEGROUT leveling solution or similar. Aluminum profiles have to be installed on both sides of a joint and are snugged by anchors, regarding the recommendations about the choice of a fixture. For simplification of installation of an insert please use WD-40 lubricant (or an analog). Follow recommendations about installation from the brochure "Selection and installation of the Dewmark profiles. General recommendations".



SV 27/200/50/50





DEWMARK STANDART

SV 27/.../65/50

Profile with a flexible insert

- For the floors in seismic hazardous areas
- For pedestrian loads
- Attractive appearance
- Wide range of insert colors
- Joint width up to 500 mm
- Movement to +/-24 mm



Technical Information

Profile	Joint width, F (mm)	Joint height, H (mm)	Visible width, S (mm)x2	Visible overall width of profile, Smf (mm)	Overall width, Sm (mm)	Horizontal movement, ΔF (mm)	Vertical movement, ΔFh (mm)	Seismic movement, ΔFs (mm)
SV 27/100/65/50	100	50	70x2	400	450	48 (+24/-24)	20(+10/-10)	100 (+50/-50)
SV 27/200/65/50	200	50	70x2	500	550	48 (+24/-24)	20(+10/-10)	100 (+50/-50)
SV 27/300/65/50	300	50	70x2	600	650	48 (+24/-24)	20(+10/-10)	100 (+50/-50)
SV 27/400/65/50	400	50	70x2	700	750	48 (+24/-24)	20(+10/-10)	100 (+50/-50)
SV 27/500/65/50	500	50	70x2	800	850	48 (+24/-24)	20(+10/-10)	100 (+50/-50)

Material: Aluminium 6060, Plasticized PVC (UV and ozone resistant; operating temperature range:-30°C...120°C), painted black steel St3

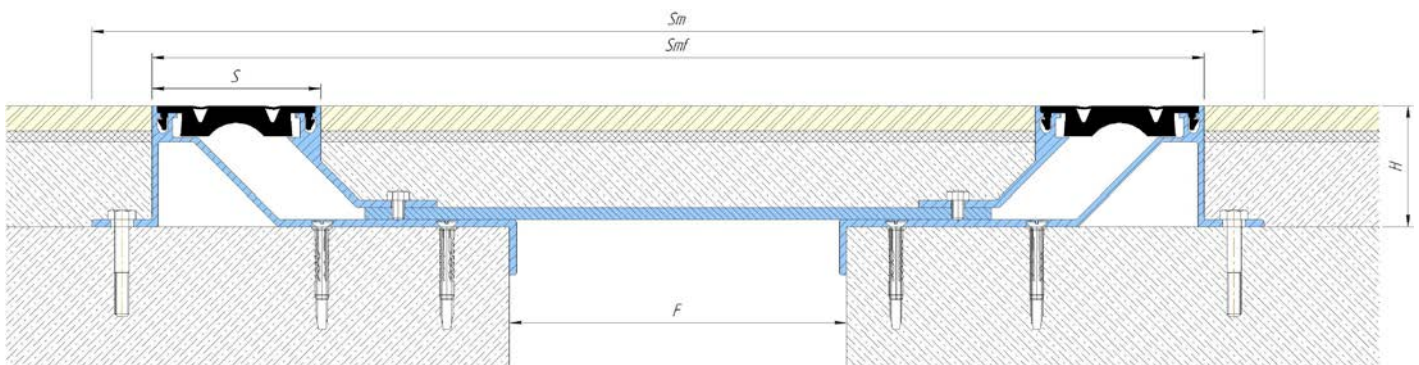
Color: black , grey (7035), beige (1015)

Standard length: 2,9 meters

On order : Any desired color insert to the RAL catalogue

Extras: A profile can be equipped with various inserts (see page "insert options"); **the joint width can be adjusted on custom basis**

Installation: Roughnesses of a surface on which the profile is fixed have to be eliminated by MAPEGROUT leveling solution or similar. Aluminum profiles have to be installed on both sides of a joint and are snugged by anchors, regarding the recommendations about the choice of a fixture. For simplification of installation of an insert please use WD-40 lubricant (or an analog). Follow recommendations about installation from the brochure "Selection and installation of the Dewmark profiles. General recommendations".



SV 27/200/65/50



DEWMARK
expansion joint systems